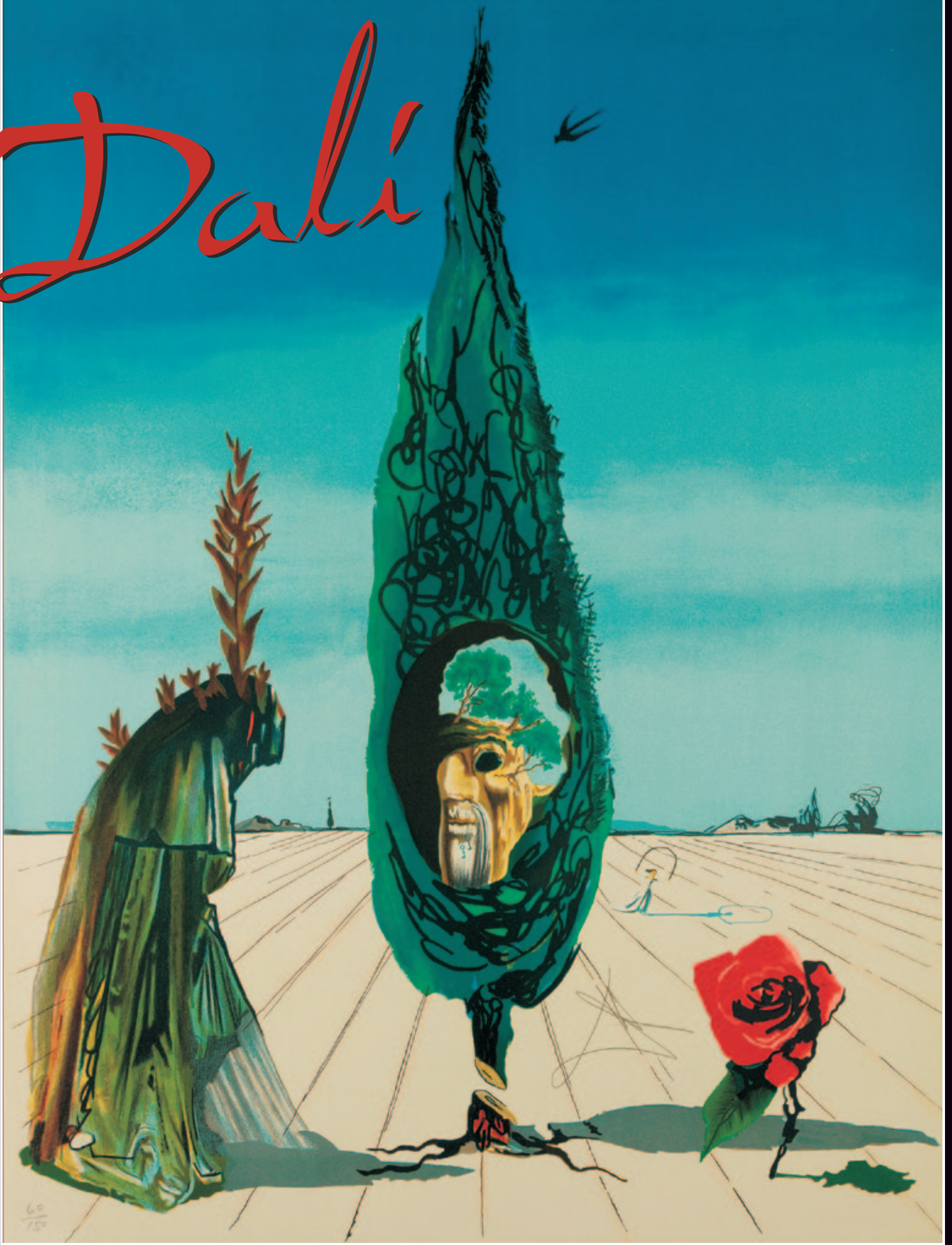


Dali



Liquid and Gaseous Television, 1975-6

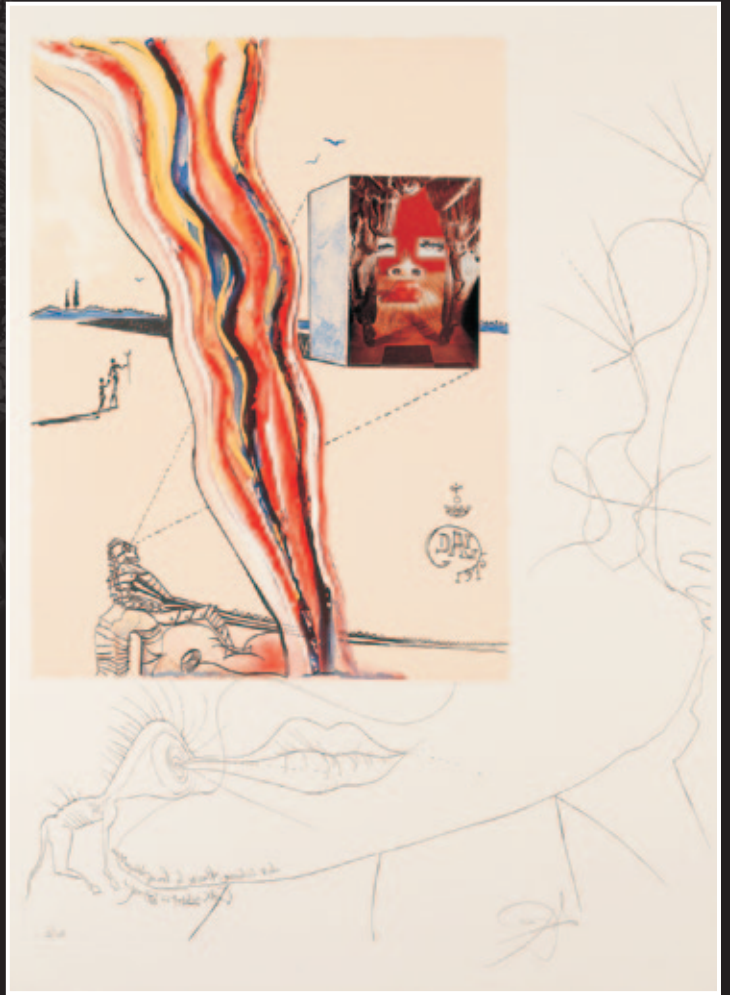
Dry point etching combined with lithography,
silk screen printing and collage

Signed lower right, numbered lower left 54/250
Merric Chase Publishing Association, Ateliers Rigal (intaglio)/
Desjoberts (Lithography)/Chicago Serigraphy Workshop (silk
screen and collage). From the series of 10 "Imagination and
Objects of the Future." Authenticated on verso in pencil,
"Frank Hunter, Salvador Dali Archives Ltd., 8 July 2009."

27 1/2 x 20 3/4"

Field 75-11C, Prestel 824

#910225



Breathing Pneumatic Arm Chair, 1975-6

Dry point etching combined with lithography, silk screen
printing and collage

Signed lower right in pencil, numbered lower left I-127/250
(I-1 thru I-250 on Rives "International")

Merric Chase Publishing Association, Ateliers Rigal (intaglio)/
Desjoberts (Lithography)/Chicago Serigraphy Workshop (silk
screen and collage). From the series of 10 "Imagination and
Objects of the Future."

28 x 20 3/4"

Field 75-11E, Prestel 826

#910229



*Le Dernier venu de la dernière planète
(Latecomer from the last planet)*, 1974/1976
Drypoint etching on chromolithographs on BFK Rives
Signed lower right in pencil, numbered lower left CLVI/
CLXXXXV and signed again
From the series "La Conquête du Cosmos" series; signed
and authenticated by Frank Hunter in pencil and stamped
verso, dated 18 September 2009
39 x 27 ³/₈"
Field 74-12G, Prestel 641
#910293

Le Sang du yin et du yang (The Blood of Yin and Yang),
1974/1976
Drypoint etching on chromolithographs on BFK Rives
Signed lower right in pencil, numbered lower left CLVI/
CLXXXXV and signed again
From the series "La Conquête du Cosmos" series; signed and
authenticated by Frank Hunter in pencil and stamped
verso, dated 18 September 2009
39 x 27 ³/₈"
Field 74-12L, Prestel 652
#910294





Enigma of the Rose (Death), 1976
 Color lithograph on Arches. Signed lower right in pencil, numbered 60/150 lower left in pencil; From the *Visions Surréaliste* series. 29 7/8 x 21 1/2". (Also shown on front cover) Field 76-4D, Prestel 1490. #910315



Obsession of the Heart (The World), 1976
 Color lithograph on Arches. Signed lower right in white crayon, numbered 60/150 lower left in white crayon. From the *Visions Surréaliste* series. 29 7/8 x 21 1/2" Field 76-4B, Prestel 1489. #910317



Mystery of Sleep (The Hermit), 1976
 Color lithograph on Arches. Signed lower-center left in pencil, numbered 60/150 lower left in pencil. From the *Visions Surréaliste* series. 29 7/8 x 21 1/2" Field 76-4C, Prestel 1487. #910316



The Coronation of Gala (The Empress), 1976
 Color lithograph on Arches. Signed lower right in white crayon, numbered 60/150 lower left in white crayon. From the *Visions Surréaliste* series. 29 7/8 x 21 1/2" Field 76-4A, Prestel 1488. #910314



Red Dress

Watercolor on wove paper; Signed lower center
A classic Surrealist work, painted somewhere
in mid to late 60's or early 70's. It is uncertain
why Salvador Dali created this watercolor.
It could possibly be a sketch for a costume
design. He designed many costumes for various

ballets and other purposes. This would not
explain the numerous other images in the
work, but then, explanations of the artist's
work are usually highly speculative.
10 ½ x 12 ¼". #909708



Helen and the Trojan Horse

Mixed media painting with etching.
Unique mixed media painting with etching.
Prior to the edition of 350. This work has been

authenticated by Frank Hunter at the Dali
Archives. 16 x 20".
Field 73. #908912

Salvador Dalí, 1904-1989

Surrealist Portrait of Dali Surrounded by Butterflies, 1971

Photolithograph with gouache and etching on Arches
Signed in pencil lower right, and numbered 'A 60/175' lower left
From the portfolio "Memories of Surrealism" which consists of 12
photolithographs of original gouaches with collage and original
etching. From the total edition of 500, with text by Dalí. 29 3/4 x 21"
Field 71-15 (G). #910028



G A L E R I E M I C H A E L

Building Museum Quality Collections One Work at a Time

260 N. Rodeo Drive, Beverly Hills, CA 90210

Tel: 310-273-3377

email: art@galeriemichael.com

Fax: 310-273-0879

www.galeriemichael.com

© 2009 Galerie Michael. All Rights Reserved.